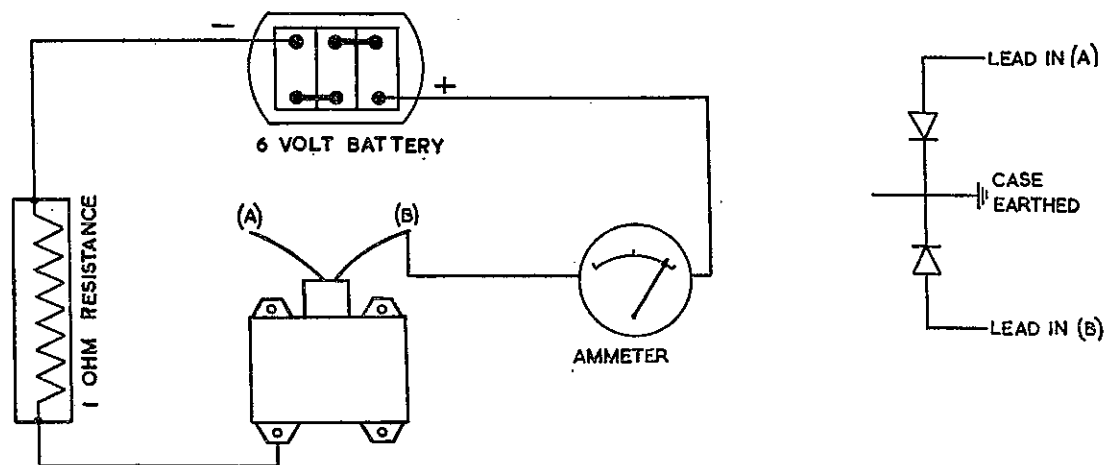


SERIES B EQUIPMENT

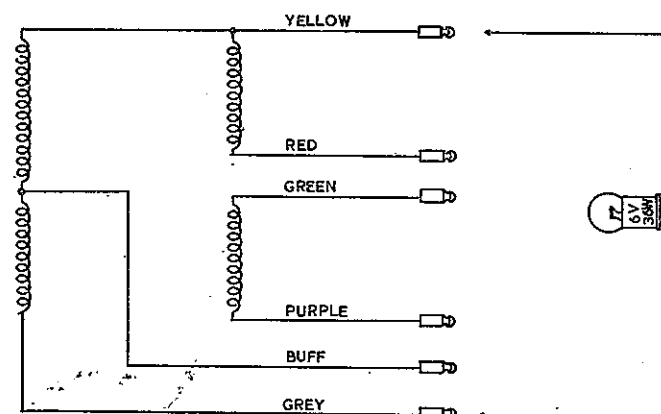
TEST 3 TESTING THE RECTIFIER



TEST BETWEEN LEAD (A) AND THE RECTIFIER CASE. REPEAT FOR LEAD (B)
RECTIFIER SHOULD PASS $4\frac{1}{2}$ –5 AMPS WHEN CONNECTED AS SHOWN IN DIAGRAM.
WITH THE BATTERY CONNECTIONS REVERSED CURRENT SHOULD NOT EXCEED
100 MILLI-AMPS.

TEST 4 EMERGENCY TEST

USING A 6 VOLT 36 WATT BULB



RUN THE ENGINE
AT A FAST IDLING
SPEED. 1000 RPM
(APPROX)

BULB	CONNECTIONS
	YELLOW & RED
	YELLOW & BUFF
	GREEN & BUFF
	PURPLE & BUFF

BULB SHOULD
LIGHT WITH
EQUAL BRILLIANCE
ACROSS EACH
SECTION.